

Enfermedades fúngicas del caqui: Principales incidencias durante la campaña 2016

Dr Antonio Vicent

Unidad de Micología

Centro de Protección Vegetal y Biotecnología

Instituto Valenciano de Investigaciones Agrarias (IVIA)

www.ivia.gva.es

Mycosphaerella nawae: síntomas y daños



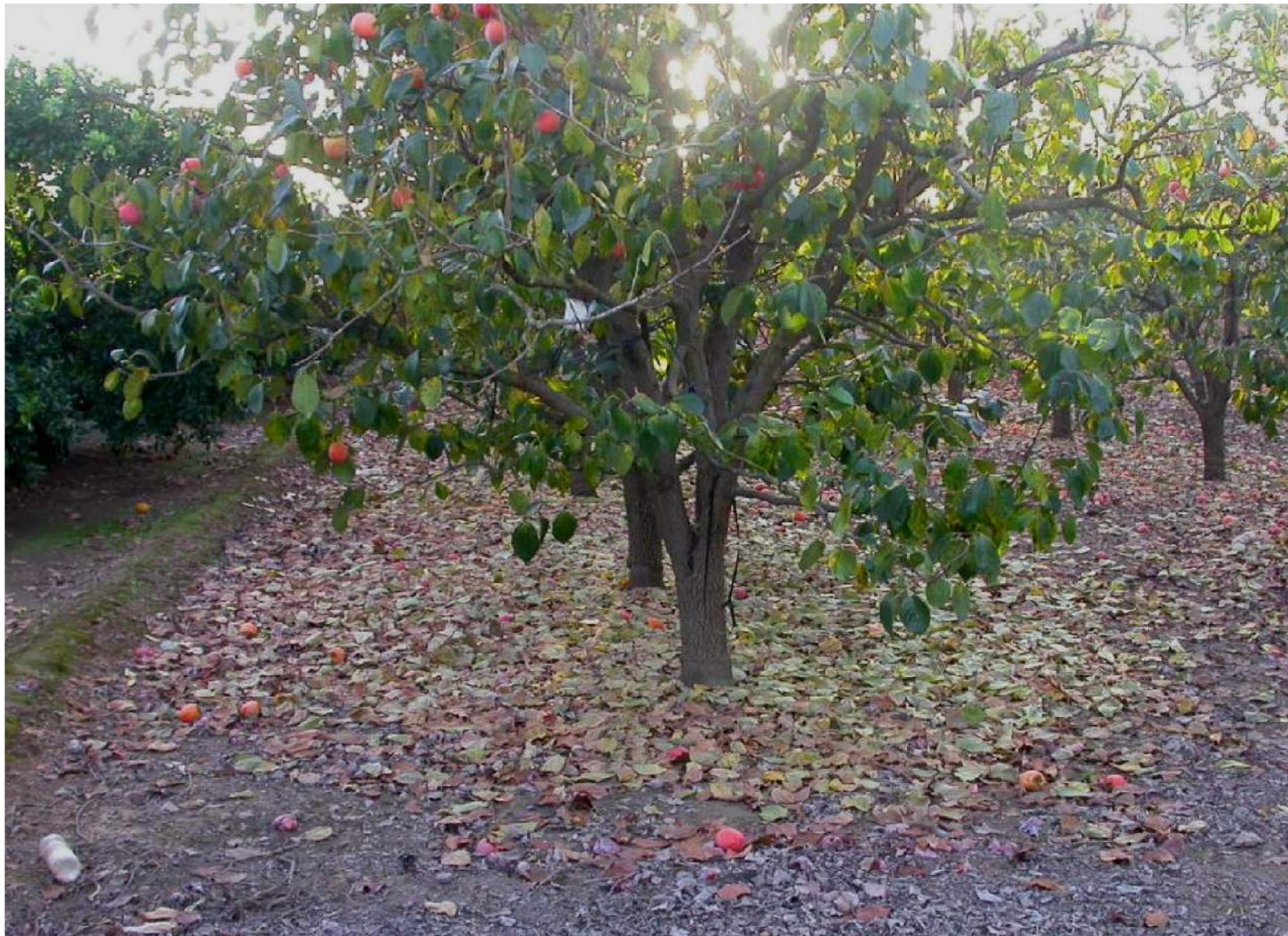
Mycosphaerella nawae: síntomas y daños



Mycosphaerella nawae: síntomas y daños



Mycosphaerella nawae: síntomas y daños



Mycosphaerella nawae: síntomas y daños

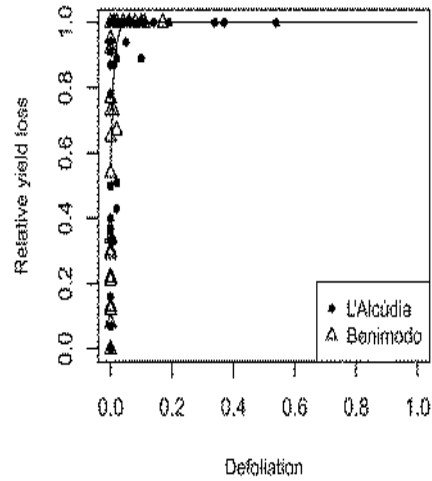


Mycosphaerella nawae: síntomas y daños

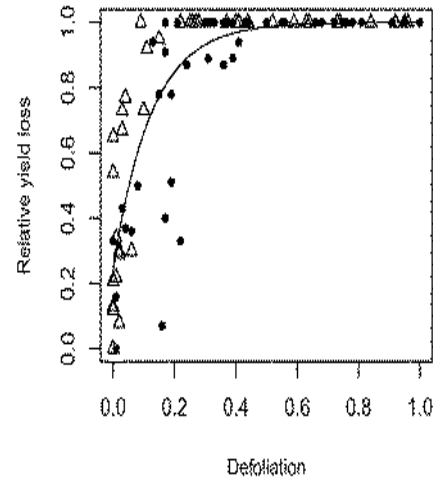


Mycosphaerella nawae: síntomas y daños

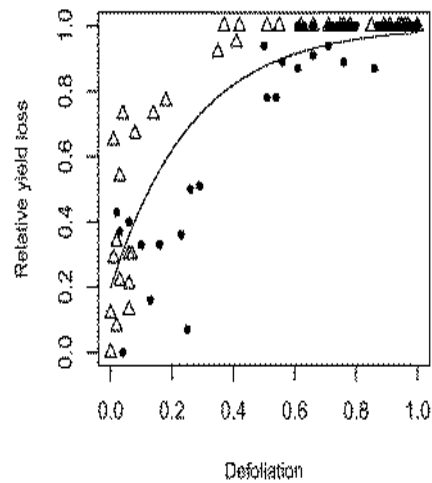
125 days after BBCH 65



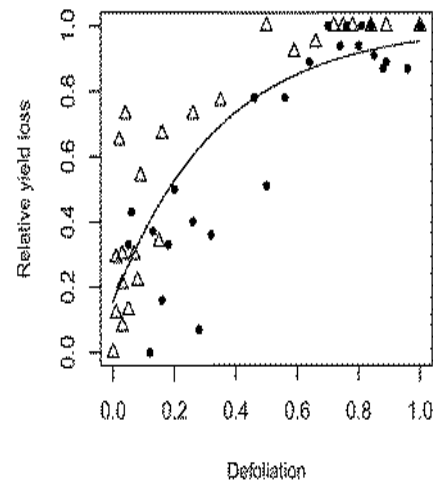
140 days after BBCH 65



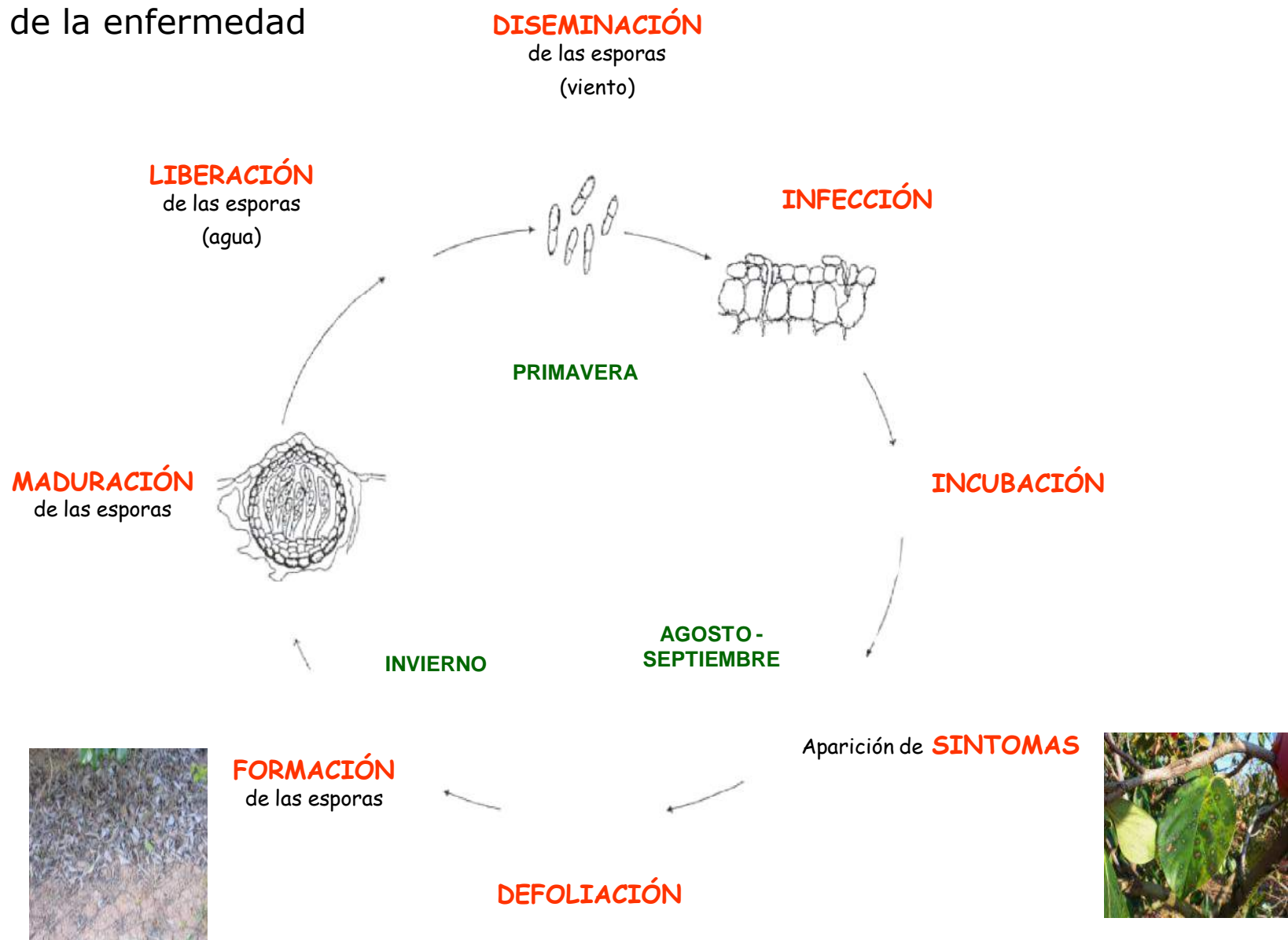
147 days after BBCH 65



155 days after BBCH 65



❑ Ciclo de la enfermedad



Riego por inundación (ἄντα)



Riego localizado (ἄγοτεο)







TESTIGO

FUNGICIDA







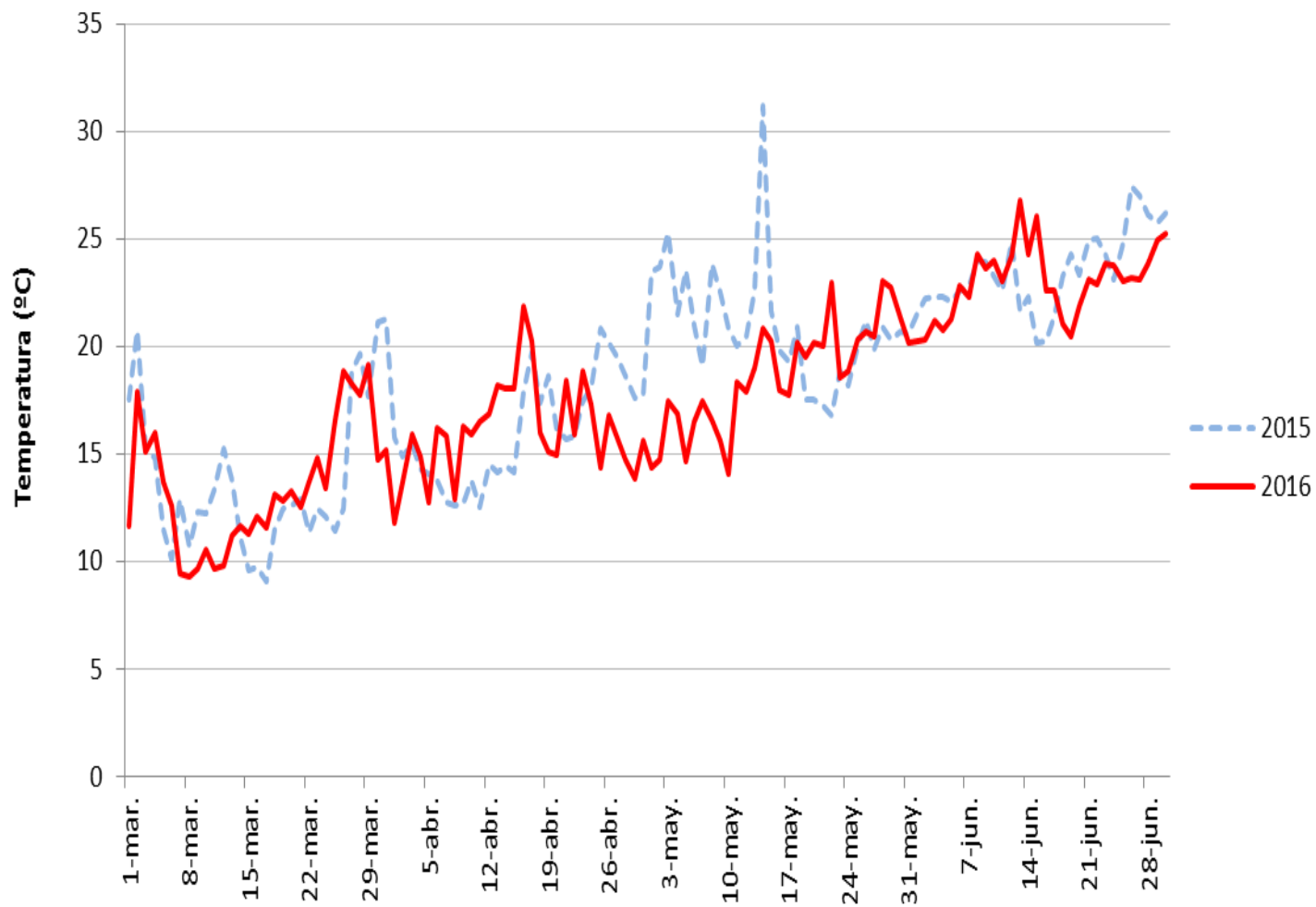




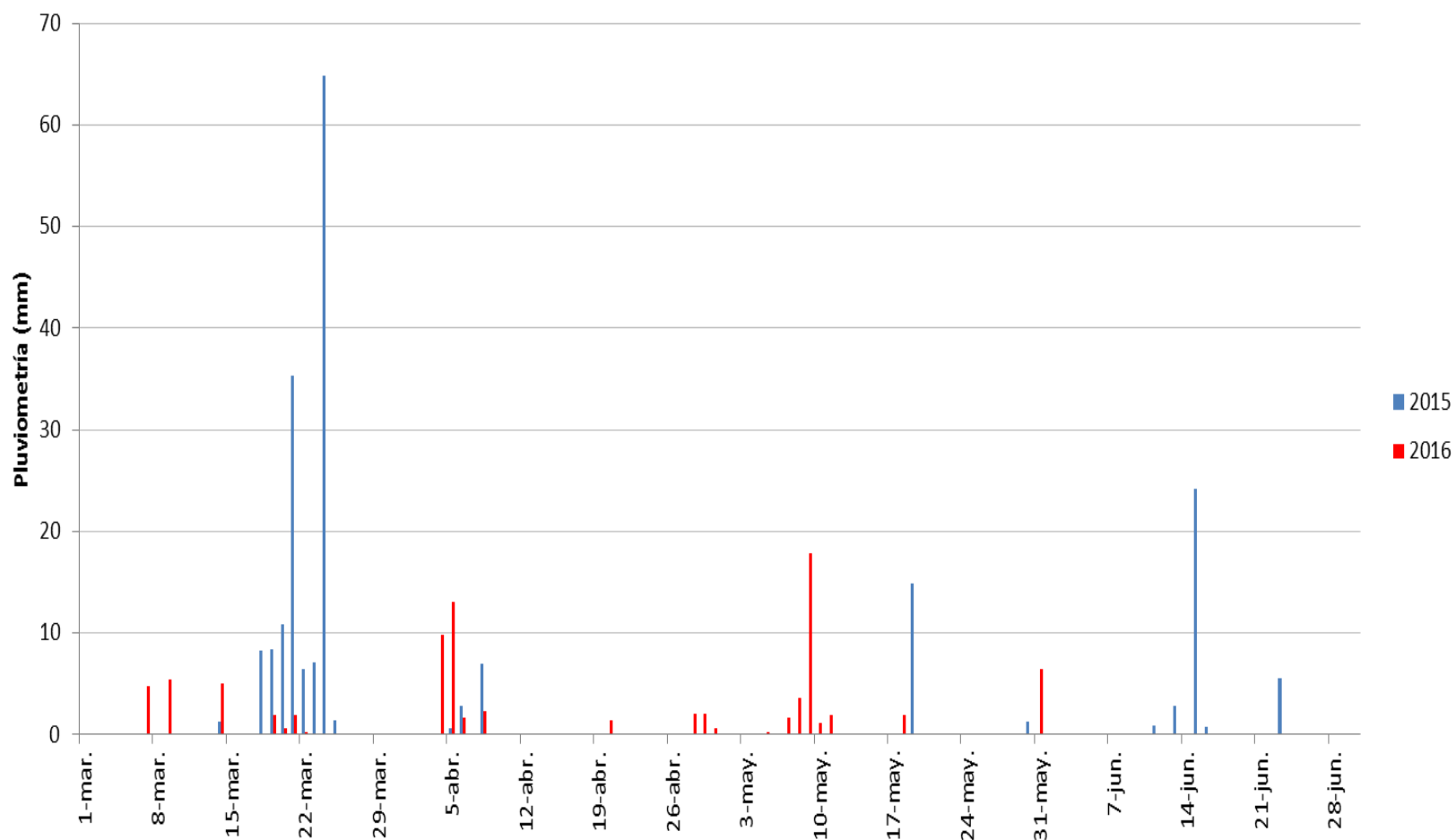




Condiciones climáticas: **temperatura**

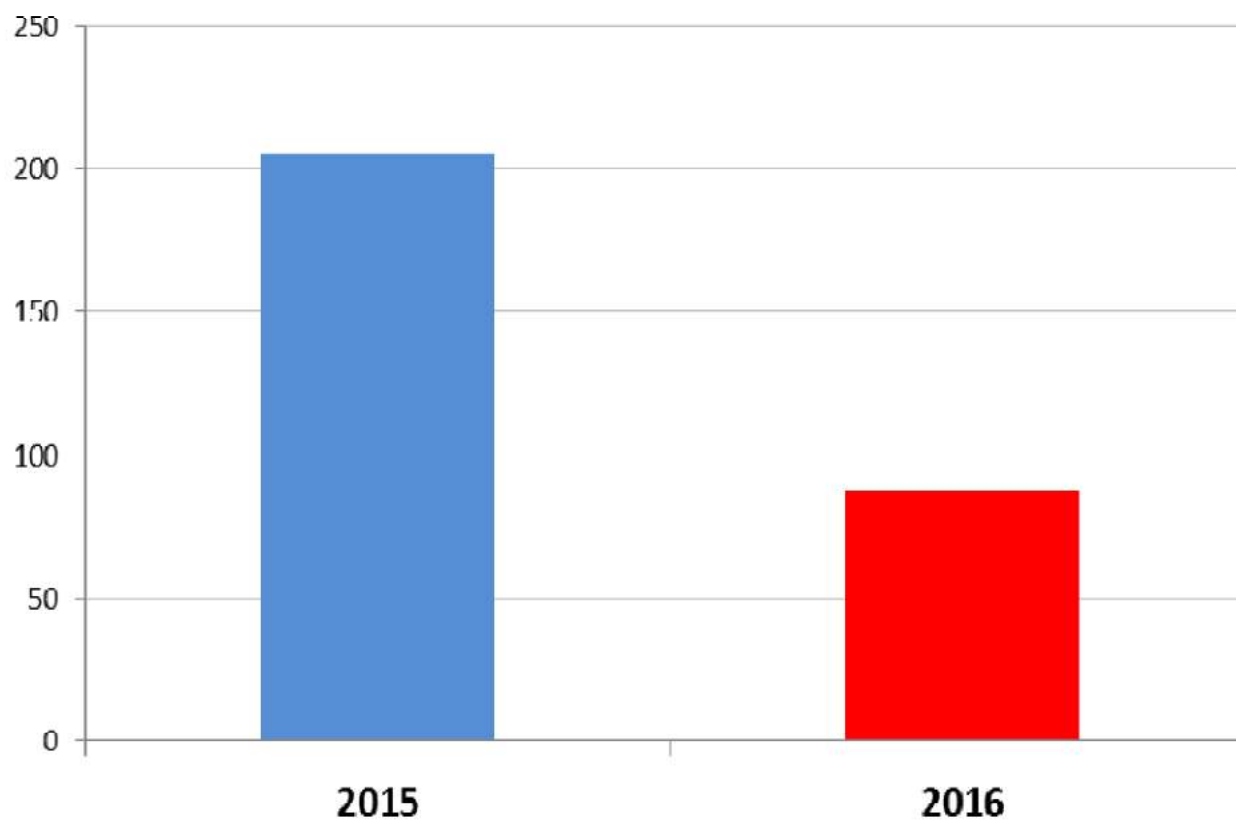


Condición climáticas: **pluviometría**



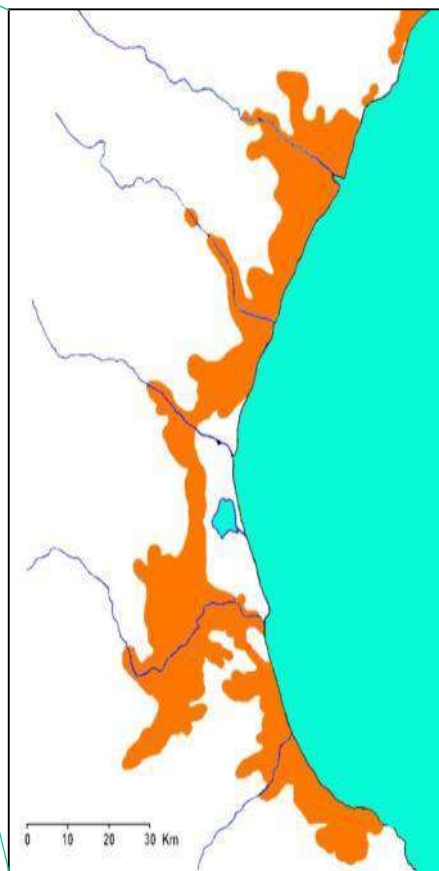
- Condición climáticas: **pluviometría**

Pluviometría (mm) (1 abril - 30 junio)

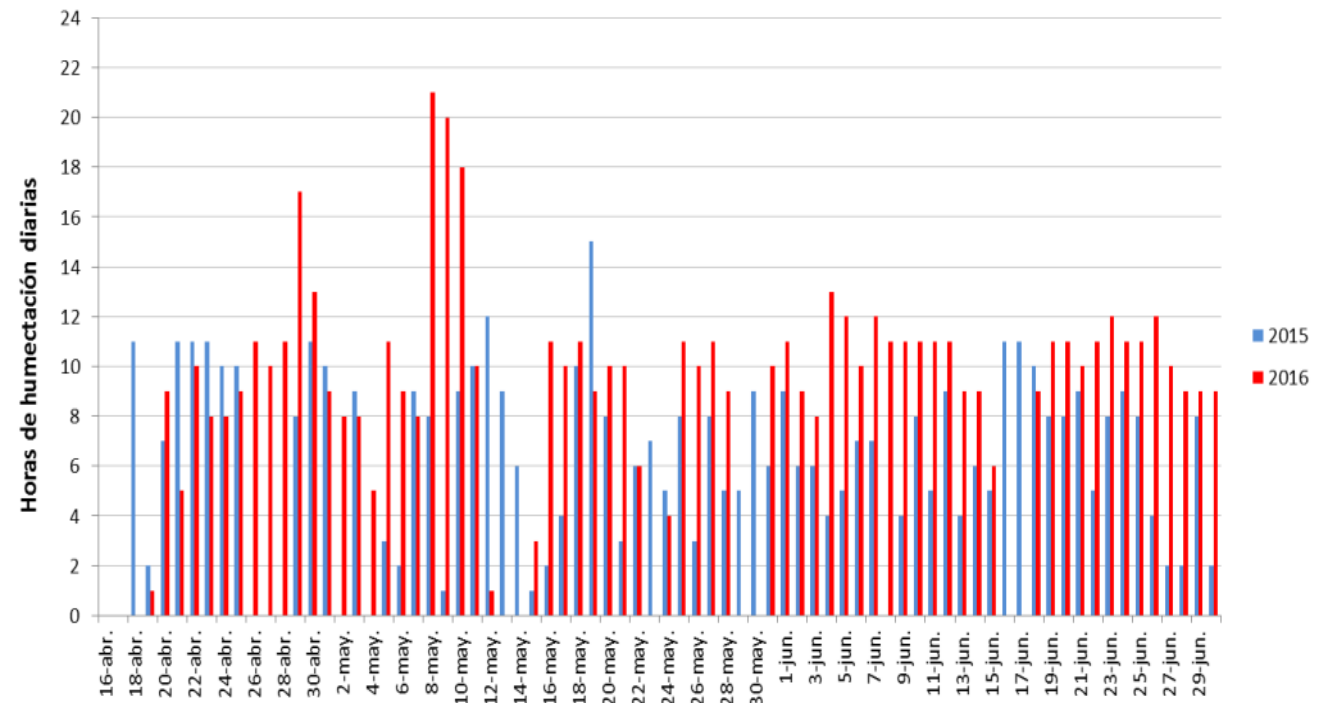




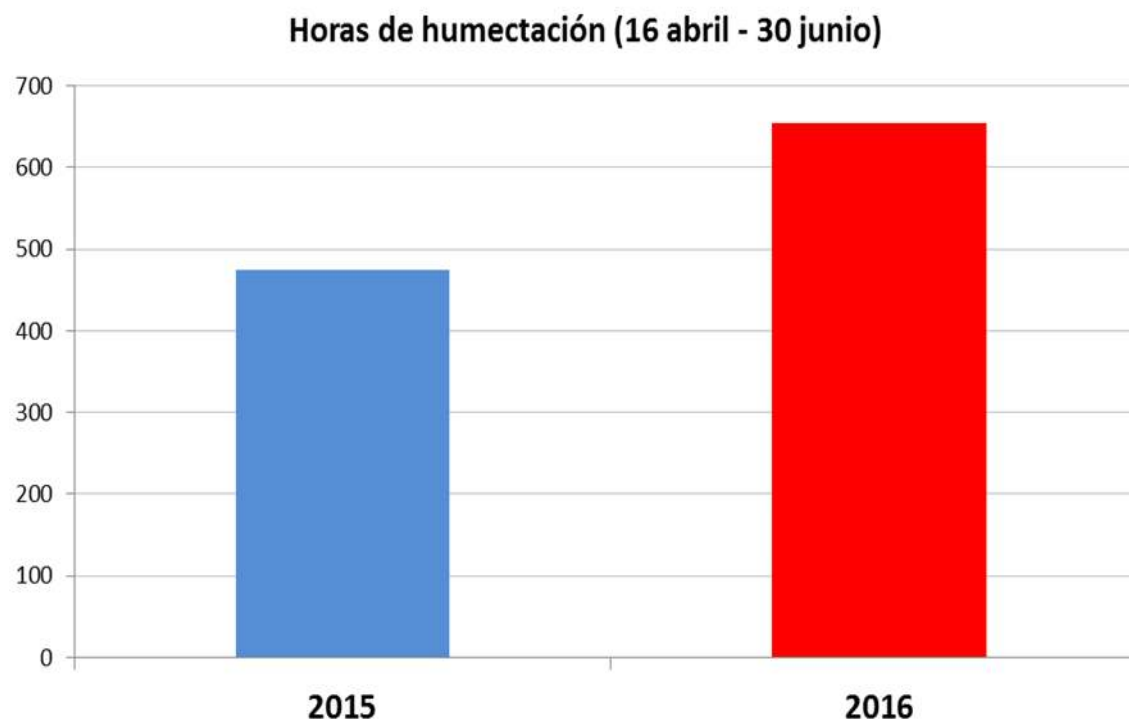
Microclima



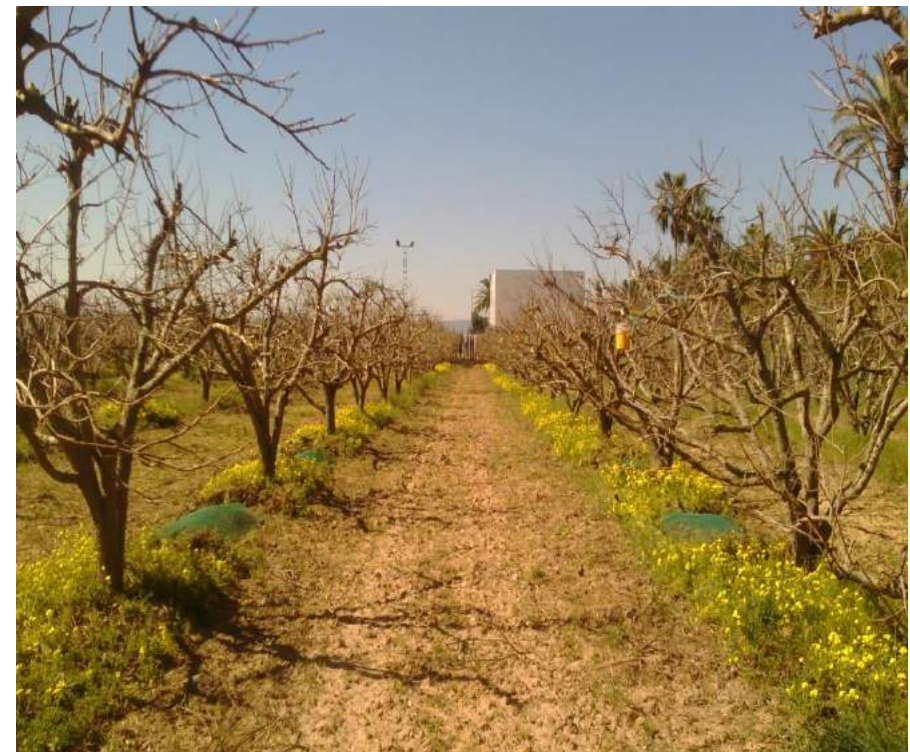
Condiciónes **MICRO**-climáticas: **humectación**



□ Condiciones **MICRO**-climáticas: **humectación**



Seguimiento del inóculo potencial



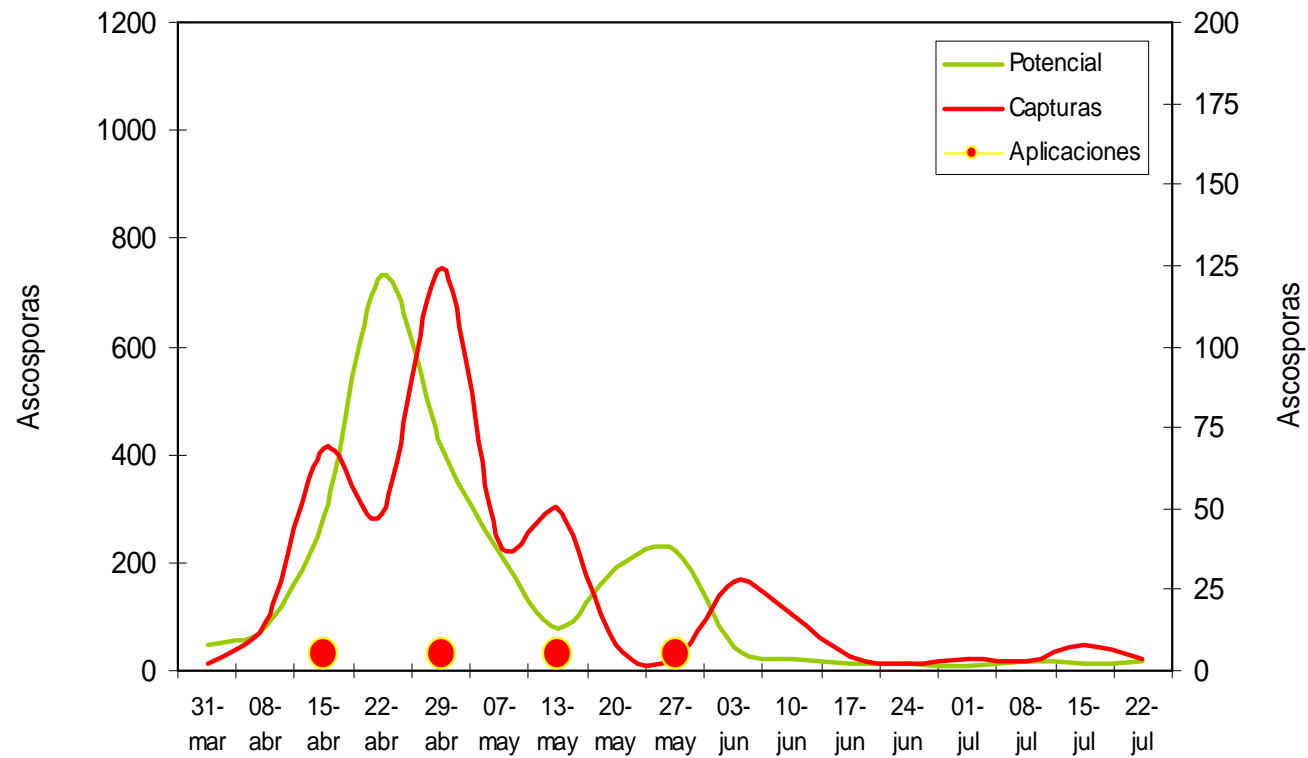
Inóculo en la hojarasca



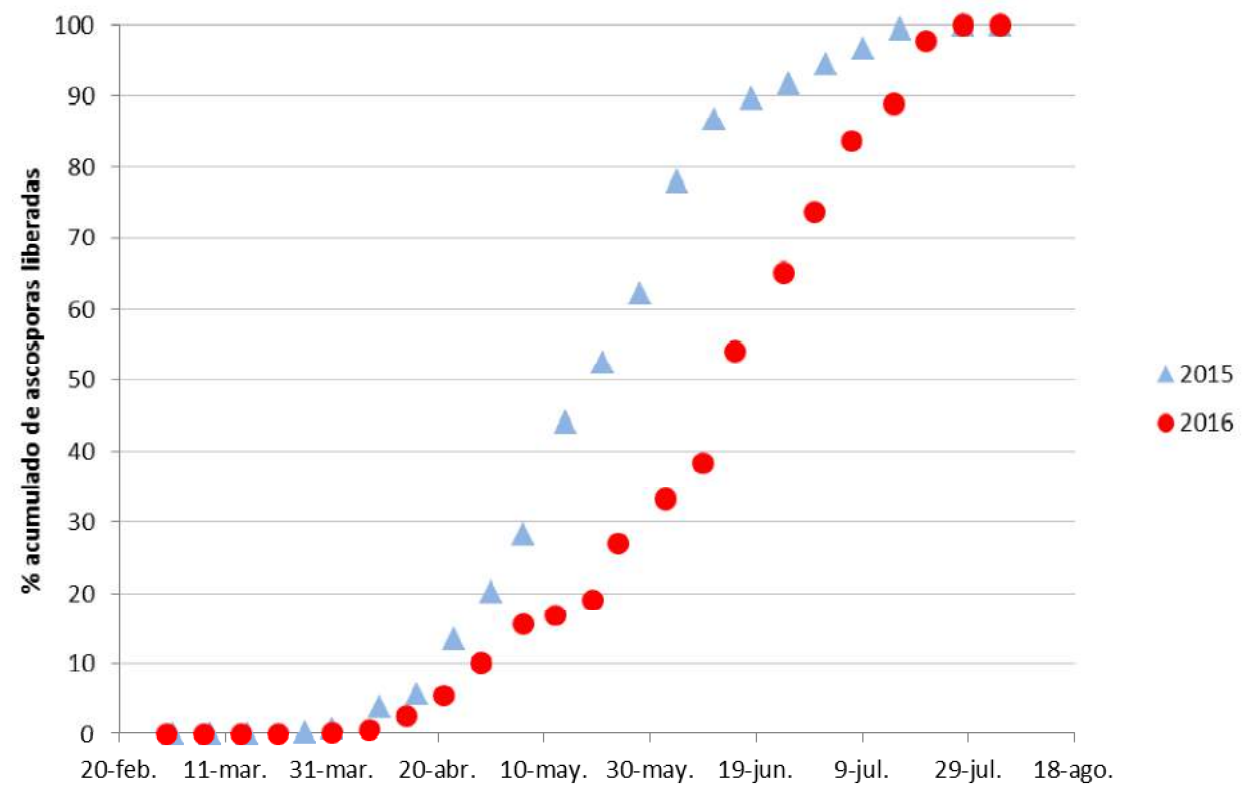
Datos climáticos



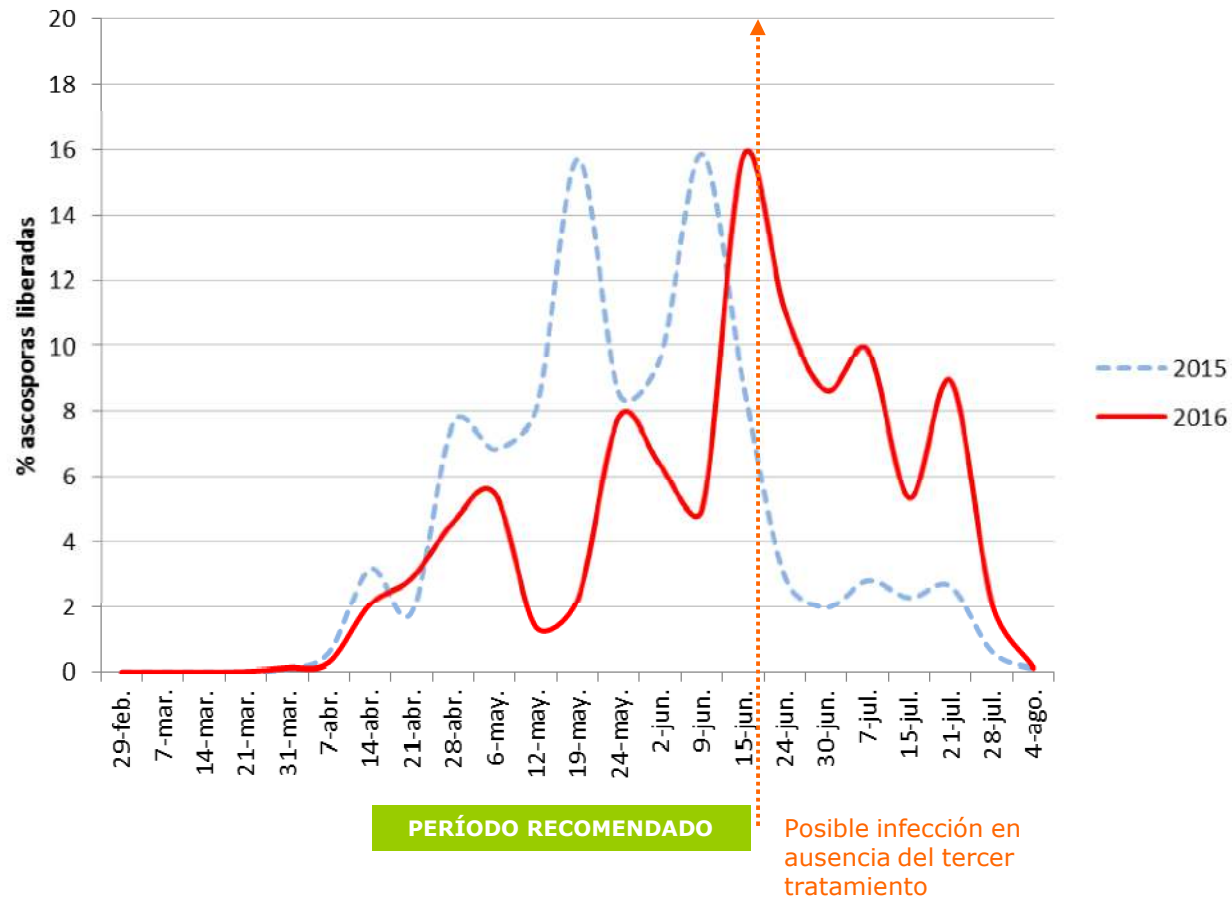
Guadassuar

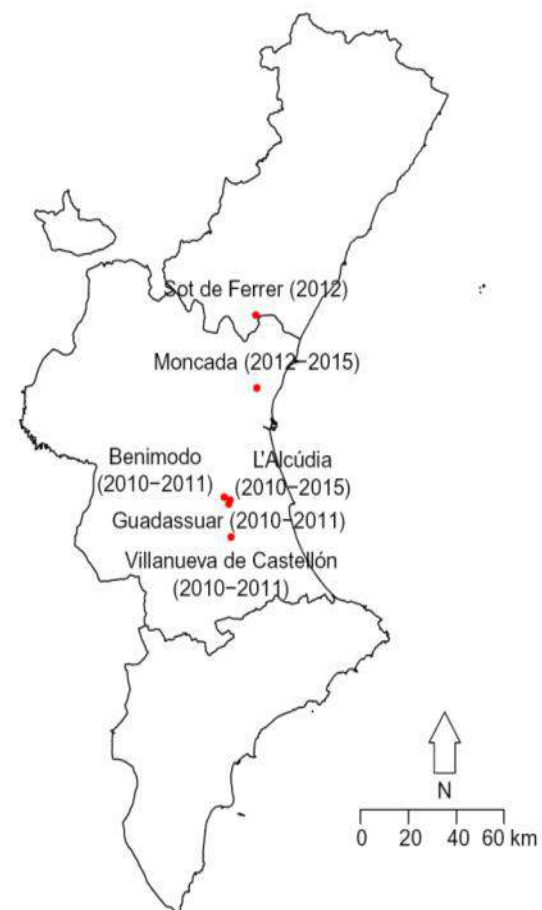


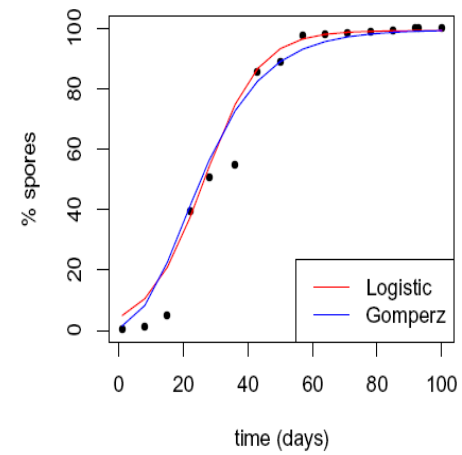
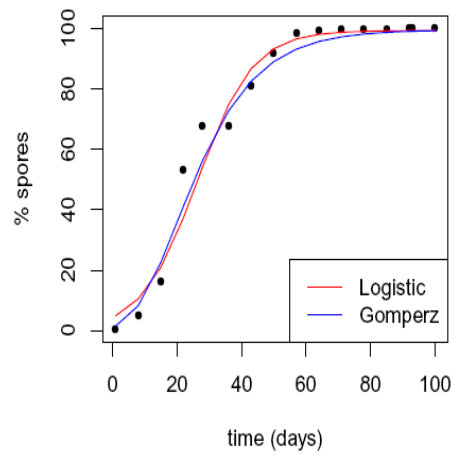
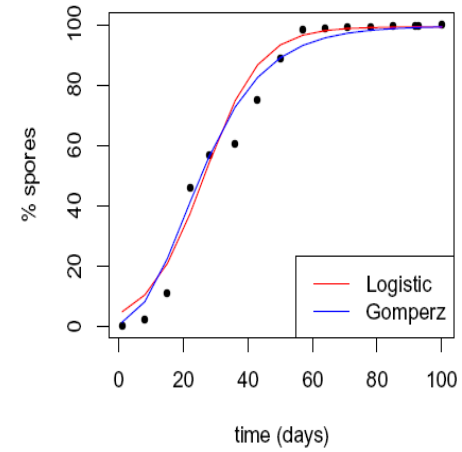
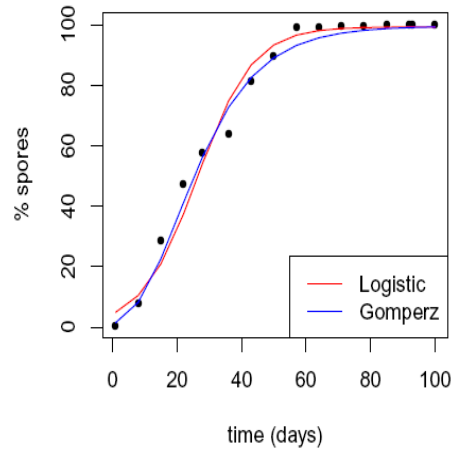
Seguimiento del inóculo potencial

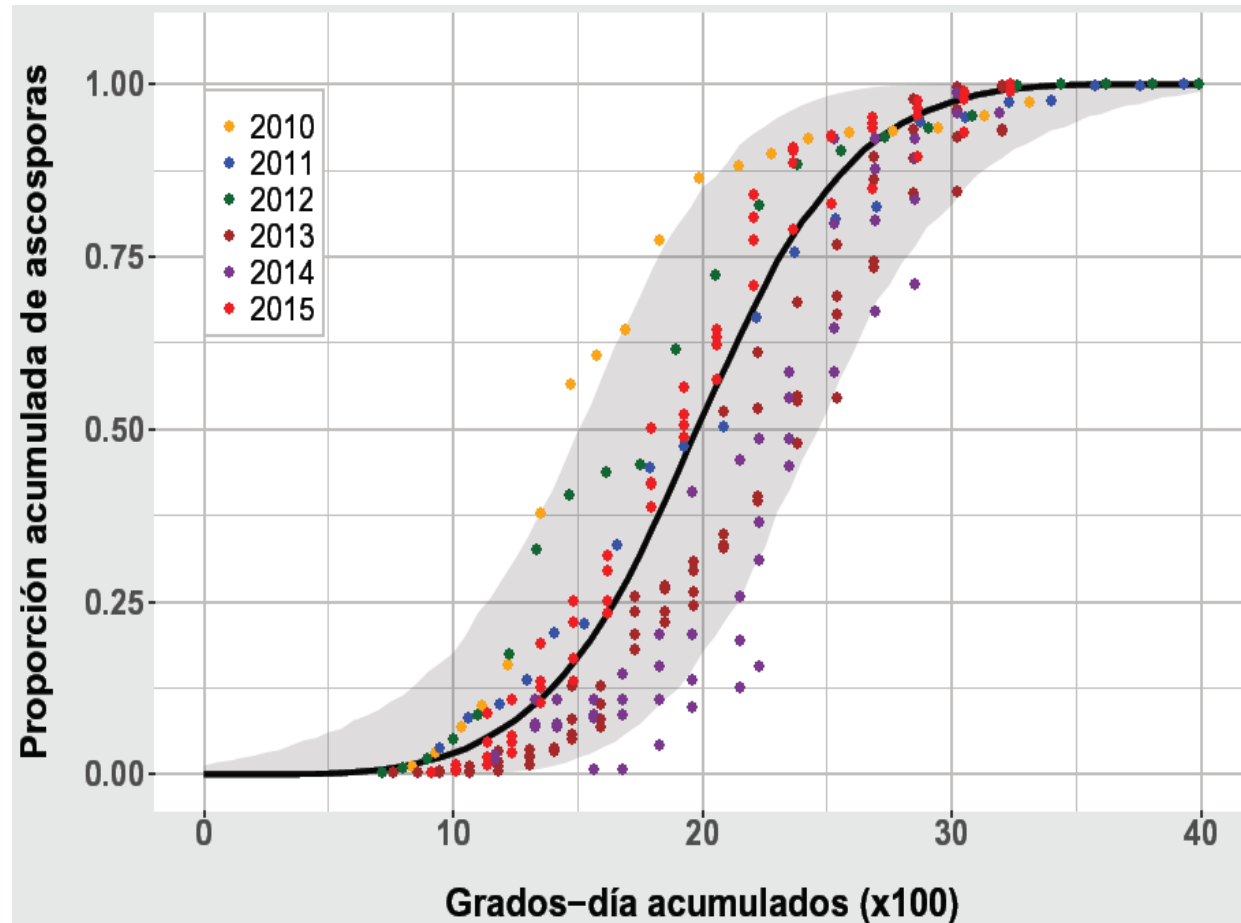


Seguimiento del inóculo potencial

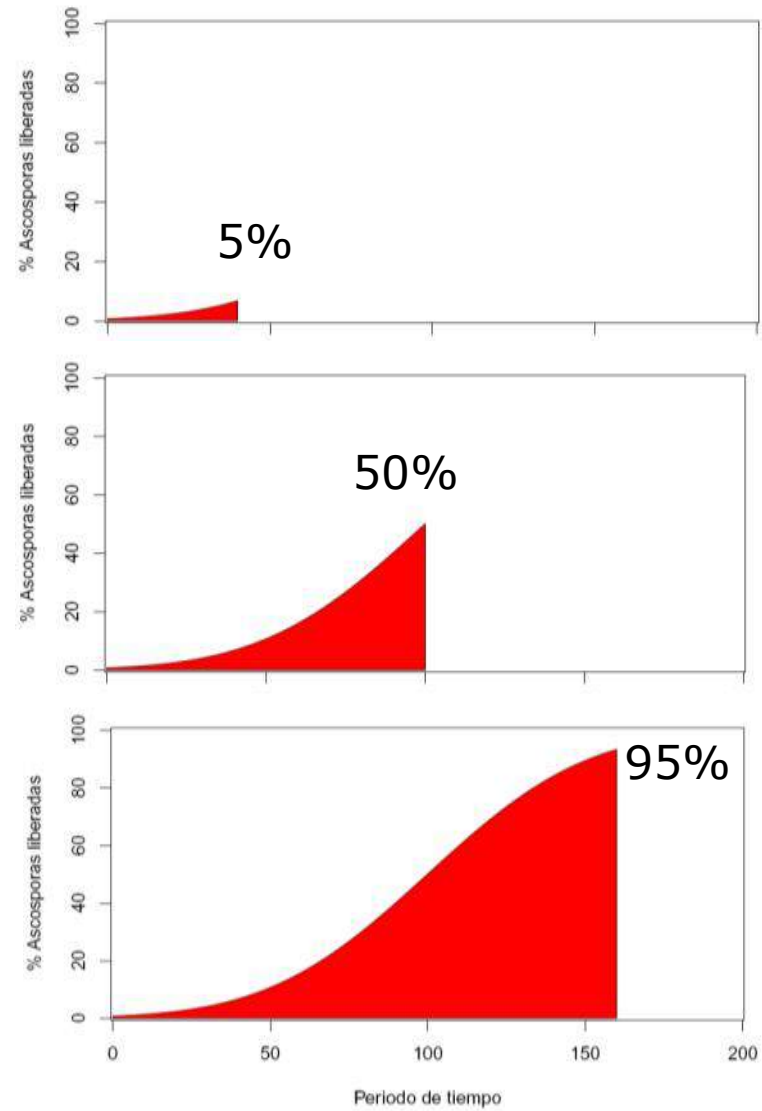








% acumulado de ascosporas liberadas



The screenshot displays the Ivia website interface. At the top left is the Ivia logo (instituto valenciano de investigaciones agrarias) and the main title 'Gestión Integrada de Plagas y Enfermedades en Caqui'. To the right is the Generalitat Valenciana logo. Below the title is a navigation menu with links: INICIO, CAQUI EN LA COMUNIDAD VALENCIANA, GESTIÓN INTEGRADA, NOTICIAS, and CONTACTO Y CRÉDITOS. A search bar is located on the right. The main content area features a large image of a peach with white scale insects, overlaid with the text 'Seguimiento plagas caqui' and 'campaña 2016'. Below this is a horizontal menu with categories: PLAGAS, ENFERMEDADES, GESTIÓN DE PLAGAS, ENEMIGOS NATURALES, EFECTOS SECUNDARIOS, TRATAMIENTOS FITOSANITARIOS, and SEGUIMIENTO. The 'ÚLTIMAS NOTICIAS' section includes a thumbnail for 'BUTLLETÍ D'AVISOS' from the Generalitat Valenciana and a map of the eastern coast of Spain with numerous red location pins indicating pest monitoring sites.

Diciembre 2016



Noviembre 2008



Noviembre 2008



Noviembre 2008



RESEARCH ARTICLE

Climatic factors affecting the occurrence of cloudy stain on the fruit skin of 'Triumph' Japanese persimmon

C. Reig, C. Mesejo, A. Martínez-Fuentes & M. Agustí

Instituto Agroforestal Mediterráneo, Universidad Politécnica, Camino de Vera s/n, 46022 Valencia, Spain

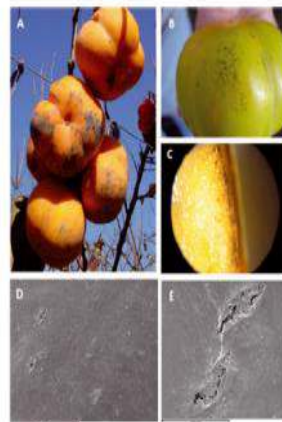


Figure 1 Cloudy stain of 'Triumph' Japanese persimmon. (A) Fruits with severe symptoms of cloudy stain develop extensive dark-brown areas. (B) First symptoms develop at fruit colour break and are characterised by a discrete number of small dark areas of the N exposed portion of the skin. (C) Cross-section of skin with well-developed symptoms of cloudy stain. (D) Surface of stained area with small cuticular cracks triggering the disorder. (E) Cuticular cracks are enlarging and joining. Photographs taken on 30 October (B), 8 November (C and D) and 21 December (A and E).



Tabla 2: Valores de severidad obtenidos en la evaluación realizada en la parcela A el 04-11-08.

Tratamientos ^a	Número de frutos				χ^2	% Frutos afectados
	0 ^b	1	2	3		
Fecha de tratamiento: 30-04-2008						
Testigo	58	309	31	2	a	85,5
Fungicida	57	288	52	3	a	85,8
Fecha de tratamiento: 4-11-2008						
Testigo	50	169	102	38	a	88.3
Fungicida	97	189	102	27	a	77.0
Testigo con pétalos	58	309	31	2	b	85,5
Testigo sin pétalos	59	25	1	0	a	30,6

^a Para testigo vs. fungicida: bloque *p-value*= 0,1885; tratamiento *p-value*= 0,1132; bloque x tratamiento *p-value*= 0,3721.

^b Escala de severidad (0-3)





GENERALITAT
VALENCIANA

ivia

GRACIAS POR SU ATENCIÓN

